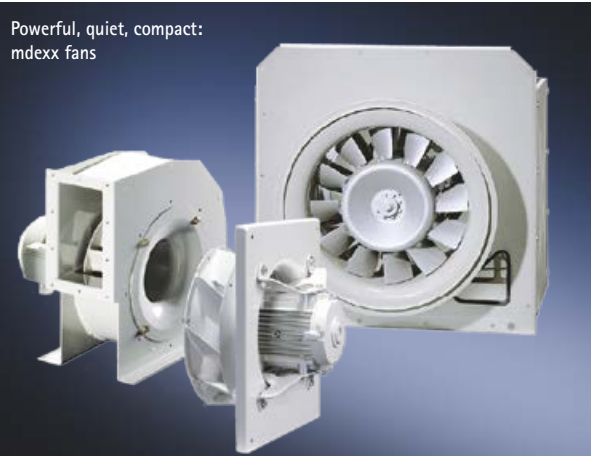


From standard to innovative solutions:  
**High quality Fans**

mdexx GmbH  
 Zeppelinstraße 30  
 28844 Weyhe, Germany  
 Phone: +49 421-5125-316/-319  
 Enquiries: fans@mdexx.com

[www.mdexx.com](http://www.mdexx.com)

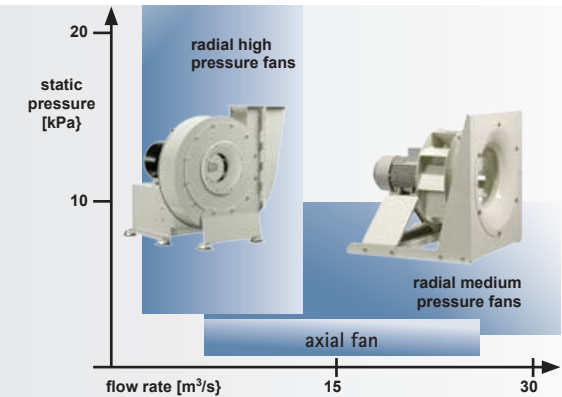
Powerful, quiet, compact:  
 mdexx fans



**Germany**  
 mdexx GmbH | Zeppelinstraße 30 | 28844 Weyhe | Germany



**China**  
 mdexx Magnetronics Tianjin Ltd.  
 2nd Floor Office P2 Building | 174 Jintang Road Hedong District  
 Tianjin | Zip code: 300180 | P.R. China

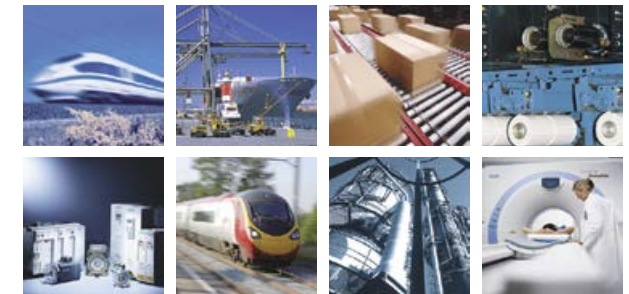


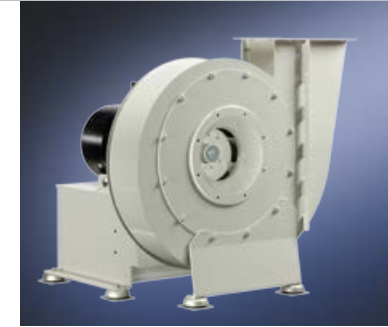
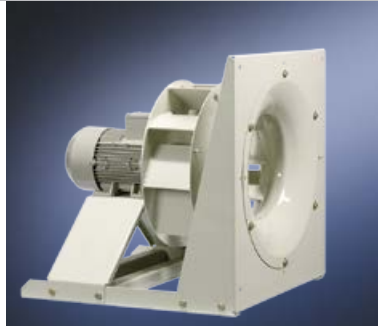
mdexx standard Fans and tailor-made  
 Fans for special applications

World class Fans for the  
 global market

## Ranges of application

- drive technology
- train applications
- laundry systems
- compressor systems
- power transformers
- wood drying systems
- ship industry
- textile industry
- process plants
- process technic, e.g. food industry





Product  
Axial Fans  
2\_T2  
Low pressure

Radial Fans (free-wheeling)  
2\_F7  
Medium pressure

Radial Fans  
2\_F7  
High pressure

High pressure Fans  
2FF8\_

Airflow  
max. 20 m<sup>3</sup>/s

max. 30 m<sup>3</sup>/s

max. 30 m<sup>3</sup>/s

max. 3,5 m<sup>3</sup>/s

Pressure  
max. 200 Pa

max. 4.000 Pa

max. 4.000 Pa

max. 20.000 Pa

- Version
- tube type casing
  - Galvanized and 3x coated surface
  - Single-phase or
  - 3-phase motor  
50 or 60 Hz – or non-standard voltages

- Powder-coated, scratch-resistant surface
- 50 or 60 Hz 3-phase motor (direct drive)
- Motors for non-standard voltages
- Special-purpose motors, e.g. explosion protected fans
- Impeller with powder-coated, scratch-resistant surface

- Powder-coated, scratch-resistant surface
- 50 or 60 Hz 3-phase motor (direct drive)
- Motors for non-standard voltages
- Special-purpose motors, e.g. explosion protected fans
- Impeller with powder-coated, scratch-resistant surface

- Powder-coated, scratch-resistant surface
- 50 or 60 Hz 3-phase motor (direct drive)
- Motors for non-standard voltages and for converters
- Impeller with powder-coated, scratch-resistant surface

Number of poles  
4 6 8 10 12

2 4 6 8

2 4 6 8

2

Motor speed (50 Hz)  
1.500 1.000 750 600 500 U/min<sup>-1</sup>

3.000 1.500 1.000 750 U/min<sup>-1</sup>

3.000 1.500 1.000 750 U/min<sup>-1</sup>

3.000 U/min<sup>-1</sup>

Impeller wheel diameter  
440, 730, 800, 900, 1.000, 1.600 mm

250 to 1.600 mm

250 to 1.600 mm

250 to 710 mm

Accessories

- Compensators
- Vibration-damping elements

- Compensators
- Vibration-damping elements

- Vibration-damping elements